



# REFLECTIONS



NORTHERN TIER NATIONAL HIGH ADVENTURE

## Sandy Bridges Retires After 32 Years

Monday, March 31, 1997 marked the end of an era. Due to health reasons, coupled with the opening of an "enhanced retirement window," Sandy and Cherie have chosen to take early retirement. Sandy's career spanned nearly 32 years as a BSA professional, and several more as a seasonal staff member at the Canoe Base. In September 1970, he was promoted to Director and held the top spot until his retirement.

His accomplishments were many. Particularly notable was the creation of the two satellite bases at Atikokan and Bissett, as well as initiation of the Okpik cold-weather camping program at Ely. His

innovations in outdoor equipment, food, and clothing are legendary and have set the standard for the industry. And, his continual infusion of the rich history of the French Fur Trade into the Northern Tier Programs has literally set the architectural style for the Ely Base.

On Saturday, June 7, 1997 a large number of Sandy and Cherie's friends and associates will have the opportunity to gather in Duluth to celebrate his distinguished service to youth, to the Base, to Scouting and to society. Invitations will be mailed to SAA members, professional associates, and family friends. The goal, of course, is to have as many as possible

in attendance. If you would like to come, you don't need to wait for an invitation. Please contact the SAA, **Butch Diesslin** (218) 365-6904, **Al Batterman** (218) 525-3593, or **Dave Hyink** (253) 863-6406 for further details.

Because of Sandy's unfortunate, untimely, and costly illness, coupled with the financial strains imposed by early retirement, the SAA Directors and Northern Tier Committee members jointly determined that creating a special "retirement account" would be an appropriate and useful gift. Those

of you wishing to make a contribution can send checks payable to "Sandy Bridges Retirement Fund" to the SAA, P.O. Box 428, Ely, MN 55731 for direct deposit to that account. A list of contributors names will be kept for acknowledgments.

In addition to the retirement fund, we plan to put together a Memory Book. It will be assembled during the Alumni Work Week, May 24-June 7. Submissions (e.g. letters, photos, newspaper clippings, etc.) are requested by May 26.

## Hirdler Named New Director



Douglas Hirdler

Heading into the 74th consecutive year of the summer canoeing program, **Douglas G. Hirdler** continues his professional Scouting

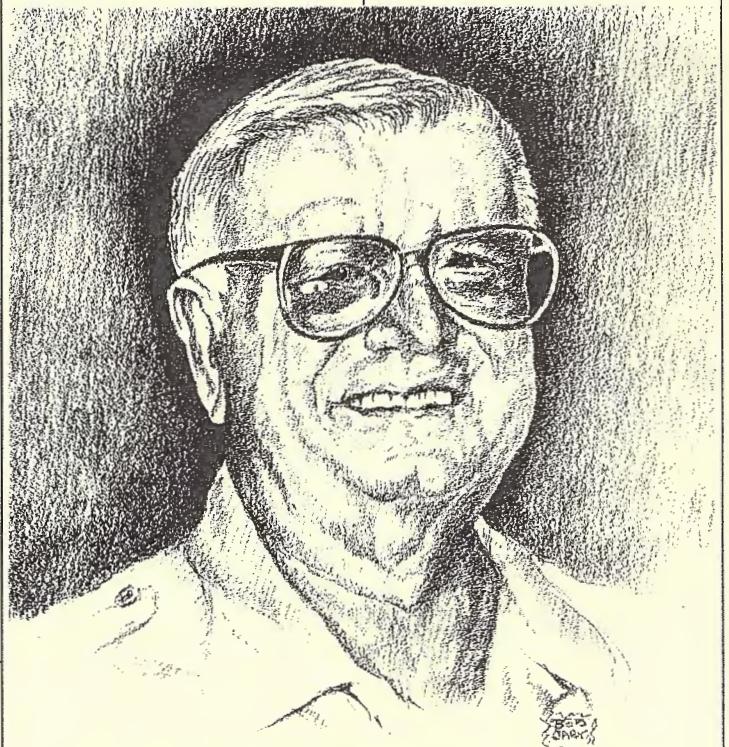
career as the ninth Director and General Manager of the Northern Tier National High Adventure Program, BSA. Since his entry into professional ranks in 1968,

Doug has served Councils in Wisconsin, Minnesota, and Missouri. He was the Council Executive in Duluth from April 1986 to September 1994. Born and raised in Red Wing, MN. Doug came through the scouting program from Cubs through Explorers — attaining the rank of Eagle Scout. He has also been an active volunteer as a Club Den Leader, Scoutmaster, Troop Committee member, Varsity Coach and Associate Explorer Advisor.

## Terry Schocke Joins Sommers Staff

**Terry L. Schocke** joined the Northern Tier Professional Staff on March 1, 1997 in the newly created position of Associate Director of Northern Tier Programs and Director of the Charles L. Sommers National High Adventure Base. An Eagle Scout, Terry has been a professional scouter since 1973 — serving BSA Councils in Michigan,

Ohio, Idaho, Washington and Oregon. He comes to us from the Cascade Area Council, Portland, OR where he was Director of Program. Raised on a dairy farm near Connersville, IN, Terry is a graduate of Purdue University. He and wife Terri, married 25 years, enjoy participating in a wide variety of outdoor activities (including canoeing).



## Sandy Remains Strong After Treatment

In late March Sandy completed a three-month round of chemotherapy and radiation treatment for a cancerous tumor in his lung. Through it all he has remained strong and surprisingly active (although he did suffer from a good case of "cabin fever" brought on by an extra-tough winter). He very much appreciates receiving "snail

mail" (2616 Woodland Ave., Duluth, MN 55803-1965) and e-mail (sandyely@juno.com). In addition, he has turned into a "net-head" and is becoming quite a "surfer." On most days, he is able to spend a few minutes on his Nordic Trac. Please keep his continued improvement in your thoughts and prayers.

## President's Message

In a recent conversation with **Gene Felton**, he related that in 73 years of continuous operation, the Canoe Base has had only 8 Directors. Gene, whose father was among that elite group, is spearheading the compilation and publication of a special book — tentatively titled *A Diamond in the North* — timed to coincide with the 75th Anniversary of the summer canoeing program in 1998. It will expand and update the 1967 work of **George Hedrick** and will document for all of us the rich history of people, places and events that have helped deliver “mountain-top” wilderness canoeing and winter camping experiences to tens-of-thousands of Scouting's youth and adults.

On April 2, due to the untimely illness and subsequent retirement of **Sandy Bridges** — Director since September 1970 — **Douglas G. Hirdler** became “number nine.” Along with the recent addition of **Terry Schocke** as Associate Director - Northern Tier Program and Director of Sommers Canoe Base, the professional leadership change is surely one of the most significant in our history.

While change is often accompanied by varying levels of discomfort and uncertainty, I submit that identifying opportunities for change, having the will (and the courage) to undertake it, and positively directing the outcomes of inevitable change, have been key to 73 continuous years of successfully “delivering the promise.”

Creating, embracing, and positively responding to change was certainly the hallmark of Sandy's tenure. His vision, leadership and just plain hard work resulted in developing satellite bases at Bissett and Atikokan to allow expansion of the summer canoeing program in order to meet the increasing High Adventure needs of Scouts

and leaders. His innovations have led to vast improvements in the utility of PFD's, camp stoves, ski bindings, tents, cooking gear, and outdoor clothing (to name a few). The “Bridges Era” also spawned significant changes in the facilities and program at Ely — particularly the Okpik cold-weather camping program. Externally, while changes in the BWCAW and Quetico regulatory environment have been no less than stellar, the net-effect has always been to provide an enhanced experience for our “customers.”

In the midst of this virtual sea of change are several islands of stability. First, like the summer of 1923 and the seventy-two summers since, crews of Scouts still come to Ely to participate in a 10-day wilderness canoe trip. Second, those Scouts continue to experience the timeless magic of the Quetico-Superior wilderness. And third, their ability to do so will be supported by a ever-increasing numbers of Sommers Alumni who have experienced the magic, understand its positive impacts on young people, and are committed to seeing that the opportunity remains forever.

Despite the departure of Sandy's involvement on a day-to-day basis, I'm confident that our best years are still ahead of us. He leaves us with a legacy of visionary leadership\* and innovation that allows forward movement from an extremely strong foundation. I hope that each of you will join me in finding a way to thank Sandy for his faithful stewardship of the Base and its programs, and for orchestrating three decades of positive change so that scores of young people can continue to experience the timeless magic of a north country wilderness adventure.



## Alumni Association Directors and Officers

Director/President (2)*	Dave Hyink	(253) 863-6406
Director/Vice President (1)	Barry Bain	(612) 944-5178
Director/Secretary (2)	Butch Diesslin	(218) 365-6904
Director/Newsletter (2)	Roy Conradi	(770) 496-0920
Treasurer	Nigel Cooper	(612) 738-1242
Director (3)	Patrick Cox	(214) 342-8786
Director (3)	David Greenlee	(605) 594-6287
Director (3)	Jay Walne	(901) 278-2633
Director (3)	Wade Herbranson	(218) 365-3162
Director (2)	Robert Welsh	(425) 454-5628
Director (1)	Zane Beaton	(612) 861-4930
Director (1)	John Christiansen	(417) 646-8526
Director (1)	Mark Norstrom	(614) 833-9219

\*Number in parentheses is years remaining in current term.

## Program Liaisons

Mr. Bill Spice	National Director of High Adventure Pilmont Scout Camp, BSA Cimarron, NM 88714 (505) 376-2281
Mr. Doug Hirdler	Director and General Manager Northern Tier National High Adventure Program P.O. Box 509 Ely, MN 55731 (218) 365-4811
Mr. Norman Augustine	Chairman, National High Adventure Committee Lockheed-Martin Corporation 6801 Rockledge Drive Bethesda, MD 20817-1877
Mr. Steve Fossett	Chairman, Northern Tier National High Adventure Committee Marathon Securities 401 So. LaSalle Street, Suite 200 Chicago, IL 60605

**Volume 7, Number 1. Reflections** is the official publication of the Charles L. Sommers Alumni Association, Inc., P.O. Box 428, 5891 Moose Lake Road, Ely, Minnesota 55731-0428. *Reflections* is published three times a year (Oct., Feb., and July). The Charles L. Sommers Alumni Association, Inc. is a non-profit Minnesota corporation. The IRS has determined that the alumni association is an organization described in section 501(c)(3) of the Internal Revenue Code. Donations to the alumni association are tax deductible. Membership to the Sommers Alumni Association is open to all persons 18 years and older. Association dues are \$10 for Annual membership, \$25 or more annually for Sustaining membership, or \$150 (one time) for Life Membership. The association's dues year begins January 1. **MOVING...** please notify the the alumni association of your new address, phone number, etc. We will include your E-Mail addresses in the member directory. Send your address changes or additions to P.O. Box 428, Ely, MN 55731-0428 or to Butch Diesslin via e-mail at: [b.diesslin@vr.cc.mn.us](mailto:b.diesslin@vr.cc.mn.us).

# My First Canoe Trip and A Dream Come True

by Terry Schocke

This is the story of my first canoe trip.

During my second summer at Camp Bear Creek in Indiana I decided to take canoeing merit badge. The camp didn't have a lake or river, so we did all of our practice in the pool. We spent hours practicing our paddle strokes kneeling at the edge of the pool and "paddling" it. If you have ever tried to paddle a pool you know it isn't easy! We did our canoe rescues and all the other requirements for most of the week at that pool.

Finally the big day arrived to actually take a trip on real water. We loaded the canoe trailer and put in on the Metamora Canal. This is what is left of the old canal systems that were used to haul goods and people by pulling barges and canal boats before the railroads put them out of business. The canal was slow, scummy, and narrow. Our old, old, Old Town wood and canvas canoe had a bow that was shaped in a permanent right rudder. Someone must have hit a rock at one time. Anyway, we couldn't keep that canoe from running into the bank. On one of our inadvertent excursions under the trees a snake dropped into the boat. My partner screamed, stood up, and swung his paddle with all his might. We swamped, the unharmed snake swam away, and I learned the value of duct tape.

Finally we reached a point where we portaged to the "Whitewater River". This sounds pretty good, but the Whitewater River wasn't white. It was shallow, rocky, and muddy. We made our way down this river with many right eddy turns (remember the bent bow?) until we reached a stretch of river that was so shallow we had to wade the canoes. In this area there were occasional holes of neck deep water. There were a lot of Mallards on the river here, and the water was covered with duck feathers. This wasn't so bad except that

there was a factory in this same area that had a pipe dumping big floating gobs of pitch into the river. When we finally got to the end of the trip we looked as if we'd been tarred and feathered!



Terry Schocke

When we arrived back at Camp Bear Creek, tired, tarred, and tamed we had missed dinner so we were fixed a special meal

of Spam sandwiches and tomato soup. I never liked Spam or tomato soup before or since this trip, but that day I remember it was delicious.

When the aquatics director gave us our merit badges, he told us about the Region 7 and Region 10 canoe bases. I day-dreamed about going to the canoe bases and read everything I could find about them (even late into the night under the covers with a flashlight after "lights out".)

Unfortunately, I was needed on the farm, there was never enough money, and most importantly, no one ever really tried to work with my family to get me there.

I was hooked by then, and have been canoeing at every opportunity for over 35 years. The power that small adventure had in my life is tremendous. It is

still as clear in my memory as if it had happened yesterday. I think I have some idea from my first canoeing experience and other trips I have taken how great an impact an adventure at the Northern Tier has on the youth we serve.

I share this story to express my excitement and gratitude to be the director of programs at the Northern Tier. I am committed to do everything in my power to reach those other youth across the country who are dreaming about coming to the Northern Tier as I was 35 years ago. I want to ensure that their dreams come true without having to wait as long as I have.

I look forward to working with all of you in the Alumni Association in carrying forward the wonderful programs and traditions of the Northern Tier.

## Gene Felton Spearheads 75th Anniversary Book

Northern Tier Committee and SAA member, Gene Felton, is leading the effort to update and expand the 1967 work of George Hedrick on the history of the Region X Canoe Trails/Charles L. Sommers Wilderness Canoe Base/Northern Tier National High

Adventure Program, BSA. Tentatively titled "A Diamond in the North," the work will contain many photos, stories, essays and sidebars contributed by former professionals, staff, and friends of the Base. Work is underway to secure underwriting for its production — estimated to be

approximately \$15,000. Several ideas are currently being pursued. If you would like to help out with any phase of this project, please contact Gene at 12 Wyndham Lane, Bella Vista, AR 72714, (501) 855-6606, e-mail: felton@ipa.net.

## HOL-RY LISTSERV

### TO USE THE MAILING LIST:

Mail your message (to be sent to EVERYONE on the list) to:

holry@monolith.catacomb.com

Soon after you have sent your mail, you should see the message come back to you as it is distributed to all the names on the list (including yours). Please realize that all transmissions go to every subscriber.

Thus, it is important to continue subsequent private conversations via regular e-mail.

TO SUBSCRIBE TO THE LIST (for those who aren't on this list):

Mail a message to: majordomo@monolith.catacomb.com

With subscribe holry in the BODY of the message (The subject can be anything).

You will receive a response telling you if you were successfully added to the mailing list.

TO UNSUBSCRIBE FROM THE LIST (take your name OFF the list):

Mail a message to: majordomo@monolith.catacomb.com  
With

unsubscribe holry in the BODY of the message.

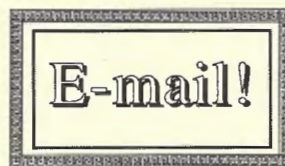
You will receive a response telling you if you were successfully

UNsubscribed to the list.

### ANY OTHER QUESTIONS:

Mail a message to: owner-holry@monolith.catacomb.com

With your question!



# Head North Young PSA'er, Head North

by Bill Cass

During my Philmont ranger days, we would occasionally hear some crews (usually from the upper mid-west) carrying on about what a great time they had at some Scouting regional canoe base along the Canadian border. Surely, I thought to myself, these folks can't seriously be comparing a few days of canoe camping out of some Minnesota back bay with a mountain-top, Philmont High Adventure experience where spirits soar. Spirits don't paddle, do they? And they certainly don't portage.

Three decades would pass before I would learn why those campers from that distant summer were indeed comparing our High Country with the Great North Woods. And with good reason, too.

Heresy? "There are High Adventure bases and then there's Philmont," you say. But you won't know until you load those Duluth packs into a canoe and paddle up Moose Lake for your enlightenment. As our council's High Adventure Chairman, it occurred to me that even though we send around ten crews to the Ranch every summer from Chester County Council, I should experience the other national bases first hand. Thus, I was off for my first (and certainly not last) trip to Northern Tier High Adventure/Sommers Canoe Base last year.

To be sure, there are similarities. We of Philmont have no monopoly on rocky trails, bears (both mini- and black), or starlit nights so bright that you almost have to squint when gazing heavenward. Tough trails? Yes, it is tough hauling some 43-pound pack up the southwest side of Mount Phillips or the eastern rim of Wilson Mesa, but not tougher than hauling an 80-pound, hip-belt-less food pack over some high grade portage trails. For sure.

Come with me now to the North Woods by paddle. To a place where you can still hear a howling timber wolf at night. And listen to the common

loon's eerie tremolo on a moonlight-silvered lake. Or camp within earshot of Basswood Falls' mighty roar. Watch the sun-glittered droplets fly from your paddle as you cruise below the magnificent cliffs on the northern end of Sarah Lake. On many rocks in those timberland lakes, you can still see "pictographs" left by the Chippewa hundreds of years ago as they celebrated successful hunts and paid homage to their forbearers and holy spirits.

Camp where you will. Invariably below soaring bald eagles. In little clearings above rocky, lakeside bluffs. Inhale those vistas of sunlight dancing on sparkling waters along deep-forested shores. Relax in pine needle-softened settings that will make you think of Copper Park or Old Abreu. Pitch your tent on a lake's southeast shore so as to enjoy a sunset that only Florida Sea Base or Mount Phillips can rival.

Listen to the night sounds — the wind in the leaves, the splash of water just yards away, the loons chasing their demons (or is it vice versa), and the great horned owls hooting close by as the first hint of light streaks the eastern sky.

Bring your compass. You will need it in the morning since we cannot navigate as faultlessly as some of the wildlife we have seen and heard.

Paddle on all kinds of water: mostly smoothwater (sometimes so still you'll swear you're skating on ice or skimming across glass), some fastwater, a little whitewater, and the occasional backwater where the mighty moose graze and a playful otter plays.

Catch a tasty dinner of smallmouth bass and northern pike, and cook them within minutes of netting them. Or, if you are talented, go deep for lake trout and walleyes, and watch them fighting the hook way down, 50 feet or more in those crystal-clear waters. Pick some blueberries on the edge of your campsite, and make muffins in Sommers' unique, lightweight trail ovens.

Visualize paddling down the

"S" chain of lakes: Silence, Sultry, Summer, Shade, and Sunday Lakes. Blue sky and blue water all the way.

Camp on an island and listen to the gentle lapping of waves as you fall asleep dreaming about the 12 miles you've paddled that day. Camp in the forest where pine marten prowl the branches and bobcats lurk in the shadows.

Portage over the same trails used by the Ojibway and French-Canadian trappers. Forget about the crowds. Trail signs. Waiting in line. The phone. The fax. It's just you. The crew. Canoes. And the Great North Woods.

Think about cooling off in that natural rock bowl half-way up Louisa Falls where laughter-drenched waters splash over your shoulders, now toughened by a week of paddling through the world's most pristine canoe area wilderness.

Maybe even learn to speak Minnesot'n, y'know.

Like most Scouting summer camping experiences, our Northern Tier expedition #807-A concluded much too soon, but created a lasting impression, new opinions, and the urge to share the adventure at that Northland paradise. When you

arrive there, you will not be met by a ranger. Rather, it will be an "interpreter," a kindred spirit who's looking for what lies around the bend in the lake the same way we seek what's beyond the mountain pass.

Those of us who backpacked professionally as rangers at Philmont, can truly sing about going back to "where the old Rayado flows" and where the "rain comes a'sleepin' in the tent where you're a'sleepin'." And a lucky few of us can also dream about going back to Isabella Lake, to Heartstop Hill, to the Meadows Portage, and to the Tuck River, too.

"Hol-Ry!"

\*Essay concurrently published in *High Country*, the newsletter of the Philmont Staff Association — hence the term "PSA'er". The author, William Cass, is a former (and future) Sommers advisor and associate member of the SAA. He is the author of "Return to the Summit of Scouting," a book about a former ranger (Bill) as he returns to Philmont as an expedition advisor and father (Wilderness Adventure Books, ISBN:0-923568-29-8).

## The Ageless Canoe Country

by Butch Diesslin

In a letter I received not long ago, **Henry Bradlich** related his insights on how the wilderness experiences of travelers in the Quetico-Superior canoe country have remained very much the same over the years. Henry was a scout on Region Ten canoe trips in 1928 and 1930, led his scout troop on a trip in 1949, and worked at the Sommers base from 1950 through 1987. Henry wrote:

"When I guided in the '50's, the boys would ask 'What was the canoe country like in the '30's?' I would say that the canoe country trees are 20 years older and traffic is

a little heavier and the red tape in entering Canada was on the increase. However once you got into Canada and a few days from the border you could experience the feeling of being deep in the wilderness and being part of it."

"In 1997 - 47 years later the wilderness is older but takes much longer to get thru the expense and red tape of entering and leaving Canada. You and I know what that's like. I'm glad that you and I experienced the simpler days in the canoe country."

# Tidbits on the Summers Clan

**Darren Anderson '78** and **Sandra King Anderson '79** met at Sommers, were married in 1983 and now live in Havre de Grace, MD; where Darren is a Mechanical Design Engineer and Sandra is a video editor and producer.

**Bob Banks '77-78** was recently named Vice President, International, by Chromaline, Corp. of Duluth, MN.

**Alan Batterman '89-Cmte** worked most weekends as a volunteer member of the OKPIK staff. Working as volunteers along with Al, were alumni members **Wade Herbranson '86-92** and **Linnea Renner '80-82**.

**Zane Beaton '69-75, 90** has moved back south and is now living in Collierville, TN.

Many thanks to **Wes Birdsong '67-69** For his donation of maps of the Atikokan area for use by the staff for trip planning.

**Curt "Bear Hunter" Carley '59-62** and his wife Sara are living in Albuquerque, NM. Curt retired after 31 years with the U.S. Fish & Wildlife Service in 1996, now thinks he might need to get a job to get some rest.

Thanks to alumni association member **Bill Cass, '95** Advisor and 60's Philmont Ranger, for sharing his very flattering thoughts about the Northern Tier experience and program with contacts on the Philmont Staff Association Listserv.

**Nigel Cooper '77, '79-80** is now Controller at Interact Security Corp. in St. Paul, MN, which provides business protection and security systems.

**R.A. Dadisman '41** wrote about his experience as a "Swamper" and guide in 1941, with base director **Horace "Hod" Ludlow**. Dick now lives in San Jose, CA.

Congratulations to

Northern Tier committee chairman **Steve Fossett '95** — on setting numerous solo flight hot air balloon records, during his recent flight from St. Louis to India.

**Curt "Frenchy" Garfield, [74521.603@compuserve.com]** many time advisor in the 60's, 70's and 80's from Sudbury, MA, came by the Base last summer to show his wife Alison why he kept coming back. Frenchy sends his best to all.

**Keith "Maynard" Gutierrez '82,83,85,95** [carlosg@cuusa.sk] is a Master Instructor and manager of the undergraduate business program at City University, Bratislava, Soviet Republic. Maynard offers a place to stay to anyone that happens to be in the neighborhood.

**Tom Hackney '51-52** was "found" for the alumni association by **John Tuthill '73-76** when these the two friendly strangers' began talking at the Dorothy Molter Museum in Ely during the summer of 1996. Tom and Darlene, his bride of 42 years, returned to re-honeymoon on one special island in Moose Lake.

**Barb Cary Hall**, friend of the Base since the 60's, sang at the Holiday Inn Sunspree in Ely during the 1997 Voyageur Winterfest. Barb hopes the other musically inclined members will join her in a Sommers Alumni "jam session" during the 1998 Reunion.

**Dennis Kelso '66** is a graduate student at Univ. Cal-Berkeley in their Energy and Resources PhD program.

**Brian Jordan '96** OKPIK Staff Training, enjoyed the training so much that he joined the alumni association. Brian is an attorney in Detroit, MI.

**Tom Lutyens '65-68, 82-90, '97** just couldn't stay away from the cold and snow and came from Washington state to assist with the OKPIK program.

**Marv Mealman '89-90** completed his Mechanical

Engineering degree in 1995 and is now working for the Prince Corp., Holland MI., and lives in Zeeland, MI.

**Tom Miller '64-67** is a troop committee member in Shawnee, KS, where he is a landscape contractor.

**Beth McCoy '75-76** lives and works at a christian retreat on the north coast of California among the redwoods. She was grateful to be reconnected to Sommers through a phone call from **Chris Clay '75-77**.

**Brad Moses '66** is a Veterinary Cardiologist in Hanover, MA; where he and his wife Nancy cheer on their top rated soccer playing son Scott.

**Richard L. Maynard '86** International staff member from England enjoys hearing about Northern Tier and the alumni enough to let us know that he is now living in Surrey, England.

**J. Ralph Payne, M.D., '57-63** is practicing emergency medicine in Kansas City, MO.

**Eric Peterson '85** is a Electrical Engineer for Cardiac Pacemakers, Inc., in Minneapolis, MN.

**Craig "Fuzzy" Reichow '67-72** has volunteered to help promote Northern Tier at the 1997 National Jamboree. Fuzzy actively promotes Northern Tier in the National Capitol Area Council.

**Jared Smith '95** is married and living in Roeland Park, KS.

**Steve Spencer '72-79** has moved to San Jose, CA.

**Dave Trampe '56-58** is retiring this June from teaching agriculture and natural resources for 28 years, and adult farm management for another 10 years, in Pine City, MN. Dave used his guide training to lead FFA student trips from 1968 through 1982.

**Jack C. Tucker '42-44** has retired as a Forester, but still sells real estate on a part time basis. He has returned many times for canoe trips in the Quetico-Superior, but has been slowed down by a bad knee.

The April 1997 issue of *Sports Afield* contains a 10-page advertising insert featuring the Northern Tier National High Adventure Program.

## Memory Joggers

by Butch Diesslin

Over my years of involvement with the canoe base, it seemed as though each year has had at least one phrase, activity, or term which brings back a flood of vivid memories. It seems as though each season had it's own new memorable item, along with some carryover items.

Many of you remember "The Mines," "Poohbah Worms," "The Superpackers", "The Purge," "Uncle Dan and Aunt Sue ...", "Yar," "The Engineers", "The Carparation". The list goes on and on.

We would like to get as many of these "memory joggers" as possible and use them as a part of the unofficial his-

tory of the canoe base. We are asking each of you to take the time to write down your memory jogger, along with a brief description of the associated individual, origin, activity or meaning. If you can remember the year it would also be helpful. (There were different "Mines" at the base in 1961, 1962, 1963 . . .)

Please send your "Memory Joggers" to the alumni association at P.O. Box 428, Ely, MN 55731-0428, and we will see that they are compiled together and made available. You can send in as many as you like.

# Executive Committee Sets Agenda for '97

Executive Committee Members **Nigel Cooper**, **Blaine Diesslin**, **Dave Hyink** met at the Sommers National High Adventure base on Sunday, March 2, 1997. Other association members present were **Tom Beaton**, **Allan Batterman**, **Dave Greenlee**, **Lou Kleager**, **Joe Mattson**, **Bob Oliva**, **Linnea Renner**, **Paul Schlieve** and **Terry Schocke**.

The date and time for the association's 1997 Annual Meeting was set to be 2:00 P.M., Sunday, June 8, 1997. A meeting notice will be sent to all members in good standing.

The expenditure needed for the materials to be included in off-water information packets, to be given to each 1997 Northern Tier participant group was approved.

The 1997 association budget, as presented by treasurer **Nigel Cooper**.

Association secretary **Blaine Diesslin** was authorized to rent a safe deposit box for the association's records.

The formation of an Electronic Communications Oversight Committee was approved. This committee will be charged with developing operating, vision and mission policies for association sponsored electronic communications. The committee will act as the oversight group for these electronic communications. **Dave Hyink** will seek member volunteers.

**Dave Greenlee** was authorized to register an Internet domain name for the alumni association. In conjunction with the discussion of the creation of an alumni association Web site, **Paul Schlieve** reported that permission has been given to add Northern Tier literature and photographs to the scouting.org World Wide Web site of the Boy Scouts of America.

The executive committee authorized the purchase of an unpainted canoe paddle for each of the 1997 staff members. The association will also provide paint, varnish, etc for paddle brands and for finishing the paddles. Other alumni funded annual staff incentive ideas for future years were also discussed.

The committee gave authorization to **Dave Greenlee** to

reserve the banquet room and a block of rooms at the Holiday Inn Sunspree, Ely, during the weekend of September 4-6, 1998, for the reunion and the scout canoe program's 75th anniversary celebration. Special activities related to the 75th anniversary activity were discussed. Some ideas were: sponsor a contest to design a special jacket patch, the production of other commemorative memorabilia.

The committee approved the amendment of Article II, Section 2.5, subsections 3 and 4 [II,2.5(3) and II,2.5(3)], to correct the omission of life affiliate and charter life affiliate membership categories. This amendment will be acted upon at the 1997 annual meeting.

It was agreed that the association would assist with the funding

for the production of the history of the canoe base and its programs, currently being written by Gene Felton. The potential methods of funding will be investigated.

The committee discussed work projects for the 1997 alumni work week — May 25-June 4. Thank you to **Joe Mattson**, Program Director for his input. These project ideas will be relayed to **Wade Herbranson**, work week coordinator; and **Bob Renner**, work crew leader.

The committee received a report of the plans for the 1997 staff training week June 4-11, 1997, from **Dave Hyink**; on behalf of **Craig Pendergraft**, staff training coordinator. Alumni volunteers are being sought to assist the Northern Tier

committee members with staff training.

**Bob Oliva** reported that the renovation work on the ground floor of the lodge has been completed, a propane boiler is installed and the carpentry work in the upstairs Hedrick Memorial Library is almost completed. The building is still in need of furniture and the Hedrick Library needs more cabinetry.

**Dave Hyink** reported that applicants for the alumni association sponsored high adventure Triple Crown Award have been received. This recognition program for individuals who have been participants at all three high adventure bases will continue to be promoted.

## Alumni Work Week May 25-June 4

The 1997 alumni work week at the Sommers base is scheduled for May 25-June 4. Agreed this is more like a week and a half, but that's to allow more people to participate in the fun, fellowship and support of Northern Tier.

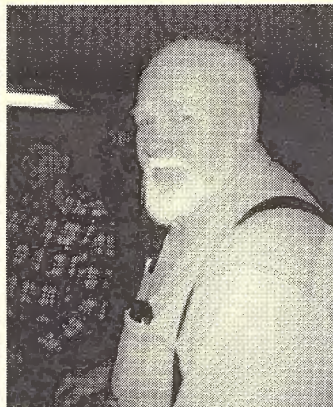
You are all invited to come up for as many days as your schedule allows and contribute your time and talents to the betterment of the base. Even if your talents are limited, your time will be well spent and will be much appreciated.

The tentative work projects include: construction of toilet facilities in the crew cabin area, extending the deck and overhang around the staff building, erecting new flag poles, finishing the entry palisade, and moving the base's main entry sign.

The preliminary planning for the work period is being done by **Wade Herbranson '86-92**, **Bob "Red" Renner '51, 56-58, 85-**, and **John Christiansen 69-72**; in consultation with Northern Tier staff members **Joe Mattson** and **Terry Schocke**.

**Red Renner** has volunteered

to be the work projects supervisor again this year. Red promises that there will be plenty of



*"Red" Renner  
Projects Supervisor*

leisure time in the evening to fish, talk about experiences and meet the 1997 staff members as they arrive.

If your schedule allows, you are also invited to come for the work week and stick around to assist with the 1997 staff training June 4-11. If you have questions about the work week, please contact **Wade** [218-365-3162], w.herbranson@vr.cc.mn.us] or **Red Renner** [507-345-4956].

### *Note from Wade*

The Sommers Alumni Association Work Week will begin on Sunday, May 25 and run through Wednesday, June 4, 1997. Many projects were identified and the following projects were approved by the Northern Tier Base Committee. The main project will be the development and construction of primitive "Pee" Shelters in the Crew Cabin area on top of the hill. Instead of walking all the way down to the "Sauna" Building, scouts have been using the area around their cabin, creating a health concern. The shelter(s) would be built to encourage scouts to use them instead of the ground around the cabins. Your help is needed in tackling this project. As in the past, there is no charge for room and board, however, you will need to bring your own sleeping bag. I encourage you to attend the entire work week but any time spent at the base will be helpful. It would be fabulous to have a large gathering of Sommer's Alumni working on this and other projects around the base when staff training begins on Wednesday, June 4. I look forward to working alongside YOU during this year's "work week."

**Annual Members Meeting  
Sunday, June 8, 1997, 2:00 p.m., Ely Base**

# 1940 Brochure Outlines Original Base Plans

## CAMP CHARLES L. SOMMERS

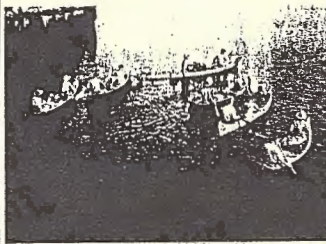
A NEW WILDERNESS CANOE

BASE CAMP



REGION TEN

BOY SCOUTS OF AMERICA



*This Bulletin is  
CONFIDENTIAL*

It is hoped that this Bulletin will be seen by every Scout and Scouter in Region Ten, and that each one will appreciate the importance of keeping this information from Chairman Charles Sommers. He knows we are planning a new canoe base, but he must not know that it is being named in his honor until he drives onto the site and sees the sign:

"THE CHARLES L. SOMMERS WILDERNESS CAMP"

If anyone makes a single "Slip of the Tongue" our plans for honoring this great man will have to be destroyed.



**PLEASE BE CAREFUL.**

Charles L. Sommers

**The Project**

During twenty years over 1,500 Senior Scouts and

Scouters of the Northwest have trekked off along border waters on the Region Ten Wilderness Canoe Trips. For most of them it has been the adventure of a lifetime. During this entire period, however, the Scouts never have had a Base Camp of their own. In recent years the headquarters have been located at a commercial resort. Under these circumstances, it is impossible to develop an ideal camp, which should include an adequate building, with the atmosphere, sanitation & safety features in keeping with good Scout practice. It is proposed, therefore, that a new base be developed to accommodate a maximum of 75 Scouts, in a location which will insure access to the wilderness area along the border lakes at all times of the season.

### Dedication to Mr. Sommers

As every one of the Scouts and Scouters knows, Mr. Charles L. Sommers has been the only Chairman Region Ten has had. He was elected when the region was established and all the growth and accomplishments of these twenty-one years are a lasting tribute to this character and leadership. A sincerely modest man, he never has permitted his name to be used in connection with his works. Through personal and family illnesses and tragedies, he never has wavered in his devotion to the best interests of our region.

It is high time this great man should be honored. Always he has been enthusiastically interested in the Wilderness Canoe Trips. In 1934 he headed a group of Region Ten Committee members over the present canoe routes with the National President Walter Head as the honored guest. We now propose that this new camp be honored by receiving his name.

### The Charles L. Sommers Wilderness Camp

When completed, the camp will include lodge or headquarters building about 35'x54', of log or semi-log construction, a properly constructed well, 8 small cabins to house the campers on their first night, latrines, and a parking area large enough to accommodate thirty cars.

The lodge will include kitchen facilities, storage space for food and equipment issued to the campers, a room for the director, a room equipped with locker space for the feeding and recreation activities of the Scouts on the first night of the trip. It is hoped that the main building, water and sanitary facilities will be completed for the 1941 Canoe Season, with the smaller cabins to be added later. In this case, wall tents will be provided for sleeping accommodations this year.

### Other Possibilities

The regional Camp Committee is anxious that the Charles L. Sommers Wilderness Camp serve as wide a purpose as possible. We have in mind that the camp might accommodate Patrols of Explorer Scouts who wish to make hiking trips in the neighboring area, and may possibly serve as a base for dog-team trips in the winter vacation period.

### How will the camp be administered?

One of two plans will be followed in the administration of the base. Either (1) a year-around director will be employed to manage the camp, or (2) a temporary director will be employed to handle the activities while in progress, in which case the equipment will be stored when not in use.

Administration of the project will be supervised by the Regional Committee through the Regional Staff, and the title to the property will rest with the National Council of the Boy Scouts of America.

### How will the camp be financed?

The Regional Camp Committee is anxious that every Scout and Scouter of Region Ten may have a part in the development of the camp, so that each may have a genuine feeling of partnership. It is therefore suggested that each Council set up the necessary machinery to make it possible for these two groups (Scouts and Scouters) to make their contributions. There are a number of ways by which this may be accomplished, including the following:

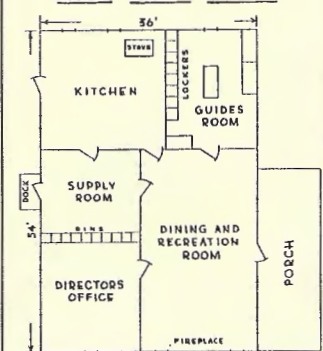
- (1) The Council Camp Committee, with the approval of the Board and members of District Committees.
- (2) The Commissioner Staff will explain the project to each Troop and Senior Unit.

In any case, it would seem important that each Troop know about the plans so that the Scouts themselves may feel that they have a personal "stake" in the project and will look forward to their opportunity to participate in one of the trips.

Enough of these booklets are being sent to each Council Executive to supply the Committee and each Troop. The method of collecting these funds is left to the discretion of the Executive Board.

The final date for completion of this program will be May 1, 1941. Contributions should be forwarded to Dr. E.H. Rynearson, in care of the Region Ten Office, 1124 Minnesota Bldg., St. Paul, Minnesota.

### BASE CAMP LODGE



# Memories of Parley Tuttle, Sommers' First Guide

by Henry W. Bradlick

Parley Tuttle was one of the first guides at the Sommers Canoe Base. In fact, he was guiding scouts on canoe trips before there was a Sommers Canoe Base. In the early 1930's, groups of scouts would use the Canadian Border Lodge and later Hibbard's Lodge as their base, Parley was one of the guides.

While he was teaching in Eveleth, MN, he spent many of his summers on 30 day canoe trips in Canada. His films of some of those trips are at the Sommers Canoe Base. If you want to get a better idea of what Parley was like, view the films. He was tall, lean, with a deep tan and a true outdoors man with a knowledge of being at home in the woods and how to "live off the land" (and lakes). He and his canoe partner lived on fish — prepared by frying, smoking and boiling in "Kala Mojkka" — and blueberries.

Parley encouraged me to take my scouts on a two week canoe trip around Hunters Island' and offered me some suggestions. He said it was easy. We found it was not that easy a trip for a group of beginners.

When we returned he asked me to apply at the canoe base. That was in 1950. Parley and I shared the same tent and worked together until he retired in 1957 at the age of 55.

Parley was a role model for all "Swampers" and guides. On guide trips he would make sure we knew how to paddle, navigate, find portages, fish, cook, build fires, put fires out, leave a supply of wood and a clean campsite for the next party.

At campfires at the base, he would get out his rod and reel, ask for a scout to be a fish on the end of the line, show how to play a fish and how to "pick up a northern by the eyes." He encouraged everyone to fish,

made trolling rigs for sale at the base, and made sure there were copper hand lines and trolling spoons for lake trout were available. I believe he started the "Fish Map", where each guide would mark the lakes where their groups had good luck fish-



Parley B. Tuttle

ing, also designating on the map if the fish caught were Lake Trout, Walleye, Bass or Northern Pike. Any guide could mark their

own map from this "Fish Map" and tell his groups where to fish with a greater chance for success.

You might say that fishing was Parley's strongest interest and influence on the canoe trips taken by the guides and participants of the base.

As the Assistant Director, Parley was also influential in all other aspects of canoe outfitting: selection of canoes, tents, food and equipment maintenance.

Parley was a true Scout and true outdoors man. Modest and unassuming, sort of like Jimmy Stewart or Gary Cooper. He loved the canoe country and guiding. When it came to compensation, he would say: "I'm getting paid for what I like to do and would be doing it anyway.", so it didn't matter to him what his pay was.

I think Parley had a great influence on the development of the Base.

**SOMMERS ALUMNI ASSOCIATION  
P.O. BOX 428  
ELY, MINNESOTA 55731**



*Address Correction Requested*

NON-PROFIT  
U.S. POSTAGE  
**PAID**  
ELY, MN  
PERMIT NO. 102