

REGION TEN  
WILDERNESS CANOE TRIPS  
RECORD OF PADDLE AWARDS

|              |  |
|--------------|--|
| NAME         | Starrar, David                         |
| ADDRESS      | 3313 Nicollet, Minneapolis, Minnesota. |
| COUNCIL      | Minneapolis                            |
| DATE OF TRIP |  |
| GUIDE        | Bob Layton                             |

|                               |
|-------------------------------|
| PADDLE AWARDS : DATE          |
| BRONZE    x - Through Cornell |
| GOLD                          |
| SILVER                        |

# A Story of the Conoe Trip David Storran

We started on our trip on the morning of Aug. the 5th. We journeyed through many lakes that day, and we saw many sights that were quite new to most of us. There was much timber that I learned to identify quite a few new trees. That night we camped on an island on Lake Inna. We had supper and went right to bed after a hard day.

The next day we stayed over for a day and I went fishing while others in the party went berry picking, two members of the party went to work and built a raft, that didn't prove successful, and the others went sailing in a canoe on which they had rigged up a sail. Later that day we roamed over country trying to see more of our surroundings. We went to bed that night quite satisfied with the whole day.

The next morning we pushed on and paddled over many lakes and we did many portages. At noon we made camp and had lunch. Then in the afternoon we headed for a ranger tower that was in the vicinity. We climbed up the tower and had the ranger explain how it operated. We returned to camp had supper and then turned in after a long hard day.

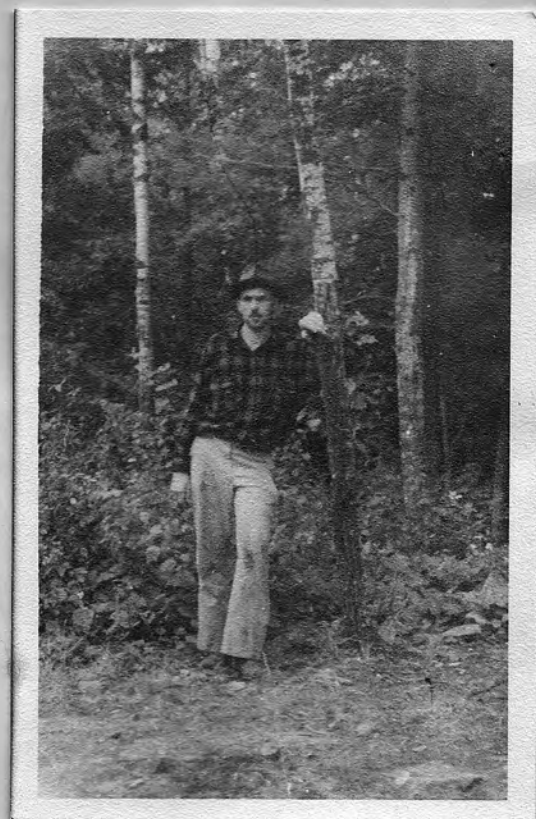
After a good night sleep we started out again. We passed many beautiful scenes and saw our first deer on the whole trip. We made camp with another party and had lunch we stayed there the rest of the day and some of us went fishing. We stayed there for the night and had a good night's sleep.

We continued on the next day and at noon we stopped at an island and had a swim and lunch. We pushed on and stopped on another island for the night. We put up camp and some went fishing while others went exploring the island.

That night we had supper the last supper we would  
have on the trail. For tomorrow we returned home,  
although most of us would just as soon stay  
here longer we had to go. The next morning  
we continued on toward home. And I believe  
most of us won't forget this trip ~~very~~ for a  
very long time.

| Tree                 | Use of wood  |
|----------------------|--|
| Jack Pine            | posts, R.R. ties, lathes, fuel, mine timbers                                   |
| Norway Pine          | spars, piling, sills   |
| White Cedar          | posts, poles, shingles, tub-staves, fencing                                    |
| Red Cedar            | lead pencils, fenceposts, cedar chests   |
| Balsam Fir           | pulp, "Canada Balsam" <sup>from this tree is</sup> used medically              |
| White Spruce         | general construction, piling posts.  |
| Blue "               | used for musical sounding boards.  |
| Black "              | paper pulp, construction, piling, posts  |
| Paper or Conae Birch | pulp, fuel, spools, basts, shoe peg  |
| Hard or Sugar Maple  | Cabinetmaking, flooring  |
| Red Maple            | Chair, woodware, turning   |
| Sandbar Willow       | has little value   |
| Black "              | wood has no commercial value, <sup>work rich</sup> in tannin                   |
| Basswood             | carriages, furniture, woodware, pulp   |
| Poplar               | household woodware, boxes, paper pulp  |
| Tamarack             | R.R. ties, telegraph poles, fence posts  |
| Pin Cherry           | wood has no economic value, birds eat fruit                                    |
| Dogwood              | lathe work, used by metal spinner, <sup>roots have</sup> medicinal value       |
| White Elm            | wheel hubs, saddle trees, barrels, <sup>ship</sup> building                    |
| Slippery "           | " " " and ribs of small boats  |
| Quaking Aspen        | paper pulp & excelsior   |
| Large-toothed Aspen  | " " " "  |
| Mountain Ash         | No commercial value  |
| Horse Chestnut       | used by European wood covers & turnbuckles                                     |
| Staghorn Sumac       | salveries, <sup>inf.</sup> & small cabinetwork, <sup>work rich in</sup> tannin |

| Plants             | Use.                                   |
|--------------------|--|
| Currants           | Fruit eaten by man & animals           |
| Gooseberry         | " " " " " "                            |
| Blueberry          | " " " " " "                            |
| Strawberry         | " " " " " "                            |
| Raspberry          | " " " " " "                            |
| Blackberry         | " " " " " "                            |
| Bunch Berry        | Fruit eaten by birds                   |
| Thimble Berry      | " " " " Man & animals                  |
| Wild Rice          | Eaten by man and bird                  |
| Wild Iris          | Prevents shore erosion, also beauty    |
| Water Lily         | No use - Beauty only                   |
| Yellow Pond Lily   | " " " " "                              |
| Cat-tail           | Prevents shore erosion.                |
| Raindeer Moss      | Early growth on rocks - eaten by deer. |
| Broad leafed aster | Beauty, becomes Humus                  |
| Bracket Fern       | - becomes Humus, also beauty           |
| Black eyed Susan   | Beauty                                 |
| Brown " "          | "                                      |
| Sponge Moss        | Holds moisture                         |



DAVID STARRAR

3313 NICOLETT AVE.,  
MINNEAPOLIS, MINNESOTA.