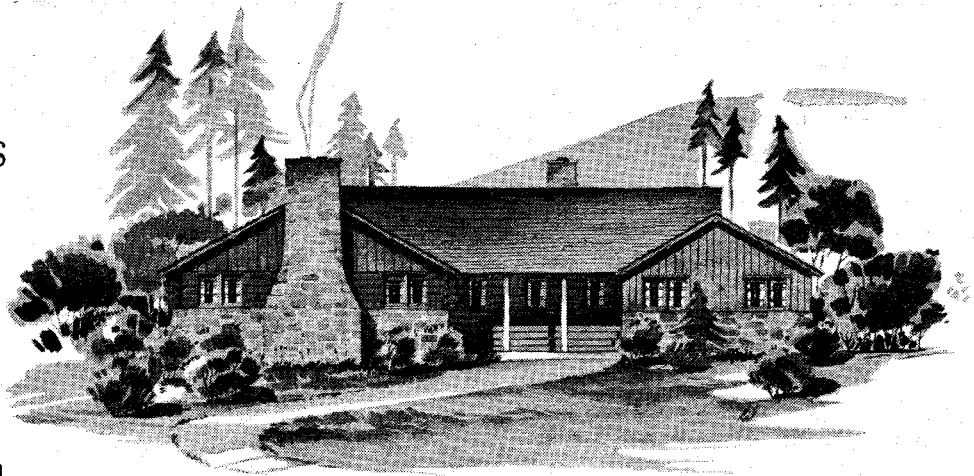


THE NEW
CHARLES L. SOMMERS
WILDERNESS
CANOE
BASE



IN the border lakes country of Northern Minnesota and Southern Ontario, lies the most remarkable canoe country in America. Here along the rocky, pine-bordered lakes and rivers are the ancient routes of the Fur Brigade and the Voyageurs. Here Lies Adventure.

THIS year a long dreamed of Canoe Base of our own will be ready for use. It is located on Moose Lake 22 miles N. E. of Winton, Minn.

OVER the past 20 years some 1,500 scouts and scouters have had the camping trip of a lifetime on these Region Ten Trails. For Senior Scouts and their leaders, these wilderness expeditions offer a camping experience second to none!

PARTIES of eight to twelve on either a one or two-week trip work out best. If you are the leader of a senior group, we suggest that you make up a party of your own members, set your dates, and get your reservations in NOW -- The next best plan is to develop a council party, or several parties of the size indicated.

FOR further information regarding details, write

Region Ten Office
BOY SCOUTS OF AMERICA
1112 Minnesota Bldg.
Saint Paul, Minnesota

CANOE BASE DEDICATION - SUNDAY MAY 17 - 3:00 P.M.

For a real thrill, join us on a two-day excursion into the Northern Minnesota Wilderness. Enjoy a 150-mile auto trip along the famous North Shore Drive and through the Lake Superior National Forest; visit the world's greatest Iron Mines and attend the Dedication Ceremony of the finest Canoe Base in the Country. All-inclusive, estimated cost not over \$20.00 per person.

Saturday, May 16 - Leave St. Paul (after the Scout Round-Up) 11:50 P.M., Northern Pacific. (Berths available after 9:00 P.M.)

Sunday, May 17 - Breakfast 7:30 A.M., Hotel Duluth. Lunch and overnight at Hibbard's Lodge on Moose Lake. Dedication and dinner at New Canoe Base Camp.

Monday, May 18 - Breakfast and lunch at Hibbard's Lodge. Entire morning for further inspection of Canoe Base; wilderness hikes, canoeing, fishing, etc. On return trip visit Virginia-Eveleth mines. Dinner at Hotel Duluth. Evening trains for East and South, or by auto to St. Paul and Minneapolis (four-hour easy drive)

Special arrangements will be made for those wishing to leave Duluth on Sunday evening for Chicago and points East.

Additional information, especially for those wishing to spend extra time at the Canoe Base, will be furnished on request.

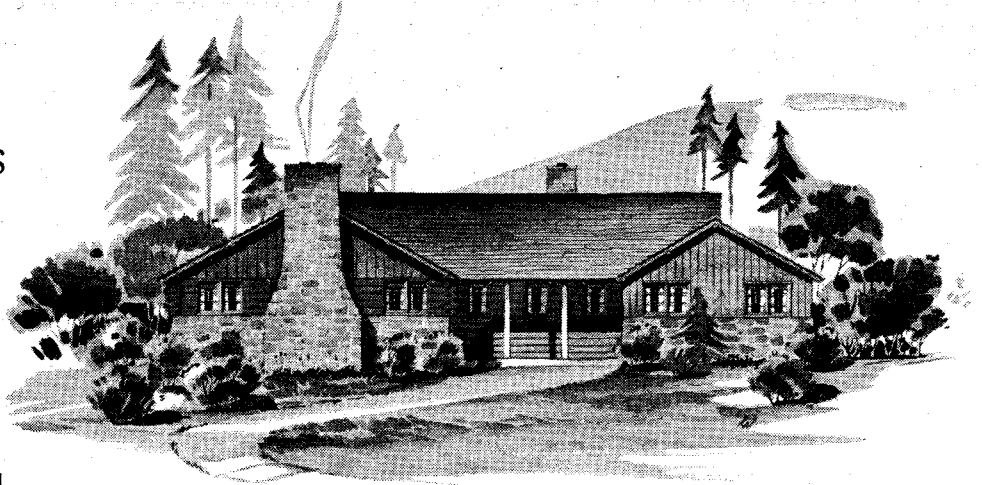
Join us in this trip. It will climax your attendance of the 32nd Annual Council Meeting. Help to honor our Veteran Chief, Chas. L. Sommers.

R.S.V.P. to Dr. E. H. Rynearson, Chairman, 1112 Minnesota Building, St. Paul, Minnesota.

Cordially,

DR. E. H. RYNEARSON,
Chairman of Canoe Base.

THE NEW
CHARLES L. SOMMERS
WILDERNESS
CANOE
BASE



IN the border lakes country of Northern Minnesota and Southern Ontario, lies the most remarkable canoe country in America. Here along the rocky, pine-bordered lakes and rivers are the ancient routes of the Fur Brigade and the Voyageurs. Here Lies Adventure.

THIS year a long dreamed of Canoe Base of our own will be ready for use. It is located on Moose Lake 22 miles N. E. of Winton, Minn.

OVER the past 20 years some 1,500 scouts and scouters have had the camping trip of a lifetime on these Region Ten Trails. For Senior Scouts and their leaders, these wilderness expeditions offer a camping experience second to none!

PARTIES of eight to twelve on either a one or two-week trip work out best. If you are the leader of a senior group, we suggest that you make up a party of your own members, set your dates, and get your reservations in NOW -- The next best plan is to develop a council party, or several parties of the size indicated.

FOR further information regarding details, write

Region Ten Office
BOY SCOUTS OF AMERICA
1112 Minnesota Bldg.
Saint Paul, Minnesota

MARCH 25TH
1942

TO: DR. RYNEARSON
DR. GEO. J. FISHER
F. A. BEAN

ENCLOSED IS A PROOF OF A PLAN FOR OUR 'FISHING TRIP' TO OFFICIALLY DEDICATE THE NEW CHARLES L. SOMMERS WILDERNESS CANOE BASE IMMEDIATELY FOLLOWING THE NATIONAL ANNUAL MEETING.

WE ARE TOLD THAT A SPECIAL BUS FROM ST. PAUL TO THE BASE WOULD COST \$110 BUT THAT SPECIAL BUSES MAY BE TABOO BY MAY. PRIVATE CARS IN SUFFICIENT NUMBER CAN PROBABLY BE FOUND. THE REGIONAL STAFF HAS THREE CARS, FOR EXAMPLE; NO DOUBT ENOUGH SPACE COULD BE ARRANGED FOR ALL WHO COULD GO.

ON PLAN ONE, TRAVEL FROM DULUTH TO THE CANOE BASE MIGHT BE ARRANGED BY DULUTH SCOUTERS FOR THE GROUP LIKELY TO TAKE THIS EXTRA SIDE TRIP. IT MAY STILL BE POSSIBLE TO CHARTER A BUS PRO-RATING THE COST IF WE CAN RECRUIT AS MANY AS TWENTY OR THIRTY TO MAKE THE TRIP.

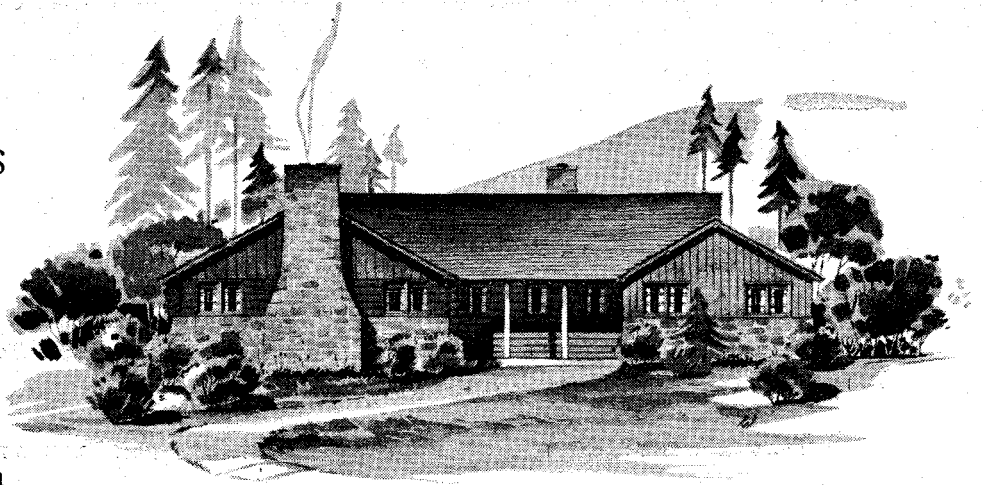
WILL YOU PLEASE STUDY THIS PLAN AND WRITE YOUR SUGGESTIONS?

CORDIALLY,
BOY SCOUTS OF AMERICA

KENNETH G. BENTZ
REGIONAL EXECUTIVE

F

THE NEW
CHARLES L. SOMMERS
WILDERNESS
CANOE
BASE



IN the border lakes country of Northern Minnesota and Southern Ontario, lies the most remarkable canoe country in America. Here along the rocky, pine-bordered lakes and rivers are the ancient routes of the Fur Brigade and the Voyageurs. Here Lies Adventure.

THIS year a long dreamed of Canoe Base of our own will be ready for use. It is located on Moose Lake 22 miles N. E. of Winton, Minn.

OVER the past 20 years some 1,500 scouts and scouters have had the camping trip of a lifetime on these Region Ten Trails. For Senior Scouts and their leaders, these wilderness expeditions offer a camping experience second to none!

PARTIES of eight to twelve on either a one or two-week trip work out best. If you are the leader of a senior group, we suggest that you make up a party of your own members, set your dates, and get your reservations in NOW -- The next best plan is to develop a council party, or several parties of the size indicated.

FOR further information regarding details, write

Region Ten Office
BOY SCOUTS OF AMERICA
1112 Minnesota Bldg.
Saint Paul, Minnesota

YOU ARE CORDIALLY

INVITED TO ATTEND THE

DEDICATION

CEREMONIES

OF THE NEW CHARLES L. SOMMERS

WILDERNESS CANOE BASE

SUNDAY AFTERNOON

MAY 17, 1942

DEDICATION DINNER - 1 O'CLOCK
DEDICATION CEREMONY - 3 O'CLOCK
DEDICATION SUPPER - 6 O'CLOCK

R.S.V.P. TO
DR. E. H. RYNEARSON
1112 MINNESOTA BLDG.
ST. PAUL, MINNESOTA

THE CHARLES L. SOMMERS' CANOE BASE DEDICATION WILL TAKE PLACE SUNDAY AFTER-
NOON FOLLOWING THE NATIONAL ANNUAL MEETING OF THE BOY SCOUTS OF AMERICA IN THE
TWIN CITIES, MAY 15 AND 16.

TRAVEL PARTIES WILL BE MADE UP FOR THOSE WHO CAN ATTEND AS FOLLOWS:

PLAN ONE
(ONE DAY)

ON SATURDAY EVENING LATE, MAY 16TH
LV. ST. PAUL, N.P. PULLMAN 11:59 P.M.
SUNDAY, MAY 17TH,
AR. DULUTH, 7:00 A.M.

SPECIAL BUS OR PRIVATE AUTO TO CANOE
BASE. THE CANOE BASE IS 138 MILES
ONE WAY.

AR. CANOE BASE 11:00 A.M.
DEDICATION DINNER 1:00 P.M.
DEDICATION CEREMONY 3:00 PM
LEAVE CANOE BASE 5:00 PM.
ARRIVE DULUTH 8:00 P.M.

FOR CHICAGO -
LV. DULUTH 8:15 PM, C & NW PULLMAN
AR. CHICAGO 8:00 AM, MONDAY, MAY 18

FOR ST. PAUL -
LV. DULUTH 11:30 P.M., N.P. RR. PULLMAN
AR. ST. PAUL 5:55 A.M., MONDAY, MAY 18
(SLEEPER AVAILABLE TILL 8 A.M.)

PLAN TWO
(TWO DAYS)

ON SUNDAY, MAY 17TH
LV. ST. PAUL 6:00 A.M., BY PRIVATE
AUTO PARTIES VIA DULUTH AND THE
NORTH SHORE DRIVE TO
AR. ENCAMPMENT FOREST BEFORE NOON
(ABOUT 190 MILES)
LUNCHEON AT ENCAMPMENT FOREST.

AUTO TO CANOE BASE (ABOUT 100 MILES)
DEDICATION CEREMONY 3:00 P.M.
DEDICATION SUPPER 6:00 P.M.
STAY OVER NIGHT FOR FISHING AND
CANOEING IF YOU CAN DO SO.

MONDAY, MAY 18TH
LV CANOE BASE 1:00 PM BY AUTO.
AR. ST. PAUL IN TIME FOR LATE
EVENING TRAINS EAST AND WEST.

IN YOUR REPLY, PLEASE INDICATE YOUR OWN PLANS FOR TRAVEL SO THAT WE CAN
MAKE RESERVATIONS FOR YOU.

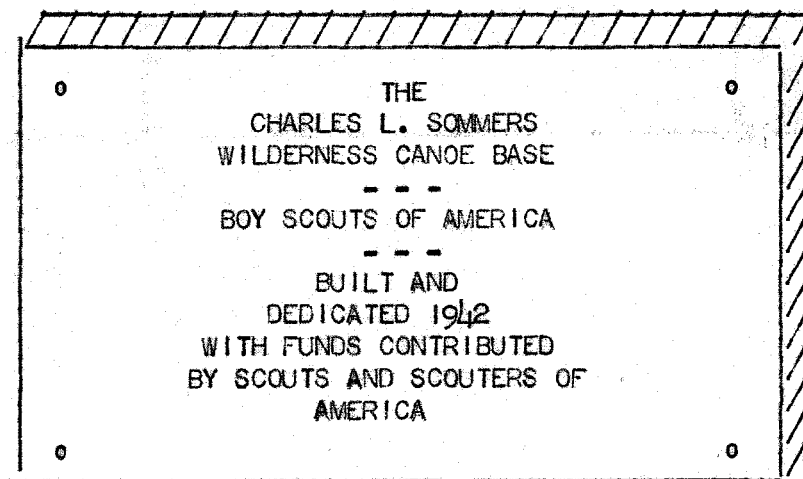
CORDIALLY,

DR. E. H. RYNEARSON
CHAIRMAN OF ARRANGEMENTS

MARCH 25TH, 1942

MEMO TO: DR. E. H. RYNEARSON ✓ F. A. BEAN
D. W. RAUDENBUSH HOD LUDLOW

HEREWITH IS A PLAN FOR THE MAKE-UP OF A SMALL METAL
PLATE WHICH WOULD BE MOUNTED AT THE CANOE BASE AS PART OF
THE DEDICATION CEREMONY ON MAY 17TH. DO YOU HAVE SOME SUG-
GESTIONS FOR IMPROVEMENT?



CORDIALLY,

KENNETH G. BENTZ
REGIONAL EXECUTIVE

May 6th, 1942.

Mr. W. M. Nichols,
Duluth Chamber of Commerce,
Duluth, Minnesota.

Dear Mr. Nichols:-

Many splendid letters have been received along with yours, building up a fine adventure trip to the Iron Range Country. Thank you much for the cordial welcome.

Arrangements have been made for the trek to follow the enclosed plan. Members of the party will include Mr. and Mrs. James E. West of New York City, Chief Scout Executive, Walter W. Reed of St. Louis, National President, Mr. and Mrs. Chas. L. Sommers, St. Paul, Region Ten Chairman, Mr. and Mrs. H. F. Pote of New York City, National Director of Personnel, Mr. F. W. Bean of Minneapolis, Vice Chairman of the Region, Dr. E. M. Rynearson of the Mayo Clinic, Chairman of the new Canoe Base, plus several other Scouters and some wives. The party looks now to be about twenty-five people, the more may be added later.

We hope to see you at the sessions, May 15th and 16th, and will look forward to enjoying our trip North on Sunday and Monday, May 17th and 18th.

Cordially,
BOY SCOUTS OF AMERICA.

KENNETH G. BENTZ,
Regional Executive.

h
Enc.



Dr. Rynearson

May 6th, 1942.

Mr. W. H. Nichols,
Eveleth Chamber of Commerce,
Eveleth, Minnesota.

Dear Mr. Nichols:

Many splendid letters have been received along with yours, building up a fine adventure trip to the Iron Range Country. Thank you much for the cordial welcome.

Arrangements have been made for the trek to follow the enclosed plan. Members of the party will include Dr. and Mrs. James E. West of New York City, Chief Scout Executive, Walter W. Head of St. Louis, National President, Mr. and Mrs. Chas. L. Sommers, St. Paul, Region Ten Chairman, Mr. and Mrs. H. F. Pote of New York City, National Director of Personnel, Mr. F. A. Bean of Minneapolis, Vice Chairman of the Region, Dr. E. H. Rynearson of the Mayo Clinic, Chairman of the new Canoe Base, plus several other Scouters and some wives. The party looks now to be about twenty-five people, tho more may be added later.

We hope to see you at the sessions, May 15th and 16th, and will look forward to enjoying our trip North on Sunday and Monday, May 17th and 18th.

Cordially,
BOY SCOUTS OF AMERICA.

KENNETH G. BENTZ,
Regional Executive.

h
Enc.

PLAN FOR THE CHAS. L. SOMMERS'
CANOE BASE DEDICATION TRIP

- ITINERARY -

IN CHARGE OF ARRANGEMENTS -

- KENNETH G. DENTZ, 1112 MINNESOTA BUILDING, ST. PAUL, MINNESOTA
- CLARENCE H. DUNNING, W. E. B. C. BUILDING, DULUTH, MINNESOTA
- C. A. BARDESSONO, HIBBING, MINNESOTA.

SATURDAY, MAY 16TH

AFTER THE SCOUT ROUND-UP (LATE EVENING)
LV. ST. PAUL, NORTHERN PACIFIC PULLMAN, 11:55
(CAR AVAILABLE FOR OCCUPANCY 9:00 P.M.)

SUNDAY, MAY 17TH

6:30 A.M. AR. DULUTH
7:30 A.M. BREAKFAST, HOLLAND HOTEL
9:00 A.M. LV. DULUTH - DULUTH, MESSABA & IRON RANGE RR.
PRESIDENT C. E. CARLSON'S PRIVATE CAR.
LUNCHEON ENROUTE
1:12 P.M. AR. DLY, MINN.
PRIVATE AUTOS TO HIBBARD'S LODGE AND NEW CANOE BASE.
3:00 P.M. CANOE BASE DEDICATION CEREMONY
6-7:00 P.M. SMORGASBORD AT CANOE BASE.
NIGHT LODGING AT HIBBARDS.

MONDAY, MAY 18TH

8:00 A.M. BREAKFAST AT HIBBARD'S LODGE.
9:00 A.M. LV. IN PRIVATE AUTOS WITH STATE POLICE ESCORT.
FIVE-MINUTE SPOOVER AT TOWER, MINNESOTA.
10:30 A.M. VIRGINIA, MINNESOTA. THIRTY-MINUTE STOP FOR
VIRGINIA-EVELETH AND NEARBY RANGE SCOUT RALLY.
12:15 P.M. HIBBING, LUNCHEON, ANDROY HOTEL.
1:30 P.M. HIBBING AND WEST END SCOUT RALLY, MEMORIAL BUILDING.
2:00 P.M. VISIT TO WORLD'S LARGEST OPEN PIT IRON MINE.
3:00 P.M. LEAVE FOR DULUTH.
6:30 P.M. DINNER WITH DULUTH SCOUTERS, GITCHE GUMEE CLUB.
7:15 P.M. AIR SERVICE TO TEIN CITIES.
8:15 P.M. C & N. PULLMAN FOR CHICAGO.
11:30 P.M. N. P. PULLMAN FOR TEIN CITIES.

RESERVATIONS FOR THIS TRIP SHOULD BE MADE AT THE
REGISTRATION DESK, ST. PAUL HOTEL