



REFLECTIONS



NORTHERN TIER NATIONAL HIGH ADVENTURE

Alumni Association Funds Two New Cabins

At the September 4 Annual Meeting of the SAA, members and directors responded to an immediate need at the Ely Base and committed the Association to raise the necessary funds and to provide the manpower to construct two new First-Nighter cabins prior to the 1995 season. As the name implies, these cabins are used to house crews for their pre-trip stay at the Base. Because of their numbers, these cabins are the key constraint that limits the number of advanced crew reservations that the Base can accept. Adding the cabins will not only result in a more cost-effective operation by adding incremental participants against a fixed-cost base, but will potentially add scheduling flexibility against a reduction in the number of BWCAW and Quetico entry permits on any given day (in particular, by

allowing more mid-week departures when permit demand is less).

The "First-Nighter Project" will have two components: Fundraising and Manpower. Funds needed for the building materials and foundation work — estimated to be approximately \$6,000 per cabin — will come from member donations (including, but not limited to monies raised under the Crossing Portages campaign). Please consider a financial contribution toward this worthwhile project as you plan your year-end giving.

The manpower will be organized by **John Christiansen**, and will consist of a week-long "alumni work party" in May of 1995 during the week before the opening of the Minnesota fishing season. Alumni and friends will spend several days

building the cabins, followed by a weekend of fishing! Mark your calendars today, and plan

on spending a few days in fun and fellowship at the Base next May. Contact John for details.

Annual Giving Campaign Unveils Paddle Emblem

Sommers Alumni Association has contracted with the XY Paddle Company of Atikokan to custom build a limited number of voyageur style beaver-tail paddles. These paddles are handmade of highest quality cedar and black ash and are fully functional, and are also suitable for hanging on your office or den wall. Each paddle

will have a distinctive "Crossing Portages" emblem. These paddles are not for sale, but may be acquired by crossing "Grand Portage," that is entering a pledge for \$2,500.00 through the annual giving campaign. More information on "Crossing Portages" will be coming in the weeks and months ahead.

"CROSSING PORTAGES"

ANNUAL GIVING CAMPAIGN

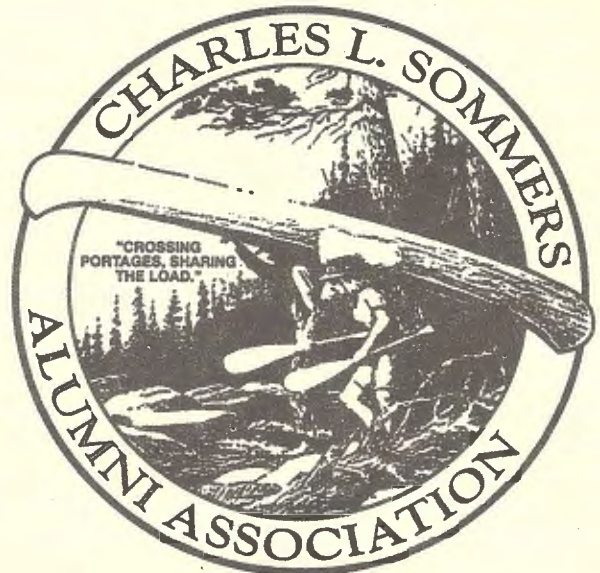
Payment Schedule (5 yrs.)

Portage Crossed	Gift	yearly	quarterly
Grand Portage	\$2,500.00	\$500.00	125.00
Horse Portage	1,000.00	200.00	50.00
Meadows Portage	500.00	100.00	25.00
Prairie Portage	200.00	40.00	10.00

Furnishings Still Needed For New Staff Center

With the completion of the new Administrative Offices, the former office building is being converted to a new Staff Center. There is still a need for interior furnishings that are not currently funded, but will be necessary for the 1995 season. Needed items include furniture, television equipment, an audio sound system, book shelves and video storage, tables and chairs. These items should be new, nearly new, or in very

good condition; and of sufficient durability and quality to ensure good performance for years to come. Exact specifications for these items may be obtained from architect **Don Melander** or from **Sandy Bridges**. CD's and video cassettes would be welcome as well. If you have any ideas on how we might obtain these items, please call **Dave Hyink** (206) 863-6406 or write us at P.O. Box 428, Ely, MN 55731.



Tidbits On The Sommers Clan

DOUG WILLETTS ('84-'86,'88,'90,'92) is a Captain in the Army and is operations officer for Joint Task Force Timber Wolf – a joint training exercise involving 5,000 members of Minnesota's Army Reserve and National Guard, along with personnel from the Marines, Air Force and Navy.

RICK GARLITZ ('76-'77) works in Marketing Communications for Owens-Corning, and lives in Holland, OH.

DICK "MOOSE" OLSON ('61-'64) is teaching Jr. High Industrial Arts in Duluth.

LEE "LITTLE MOOSE" OLSON ('63-'65) is a

Customer Service Engineer for XEROX, Corp. in Minneapolis.

CORY KOLODJI ('74-'79,'84-'89) is teaching Jr. High Science in Hibbing.

DORIS KOLODJI ('78-'79) is carrying on the tradition and legacy of Honorary Charter Member Dorothy "Ma" Harry as the director/manager of the Northern Lakes Girl Scout Canoe Base on Moose Lake.

DAVE KVAM ('66-'67,'69), a neurosurgeon, living in West Hartford, CT, related that a spring backpacking trip with his family in the White Mountains of NH brought back fond memories of June at the Base.

Alumni Association Directors and Officers

Director/President (1)*	Dave Hyink	(206) 863-6406
Director/Secretary (1)	Butch Diesslin	(218) 365-6904
Director (1)	Roy Conradi	(404) 496-0920
Director (3)	Zane Beaton	(612) 861-4930
Director (3)	John Christiansen	(417) 646-8241
Director/Vice President (3)	Barry Bain	(612) 944-5178
Director (2)	Lorri Hanson	(503) 744-2814
Director (2)	Jay Walne	(901) 278-2633
Director (2)	Dave Greenlee	(605) 371-2209
Treasurer	Nigel Cooper	(612) 738-1242

*Number in parentheses is years remaining in current term.

Program Liaisons

Mr. Bill Spice
National Director of High Adventure
Philmont Scout Ranch, BSA
Cimarron, NM 88714
(505) 376-2281

Mr. Sandy Bridges
Director, Northern Tier
National High Adventure
Program
P.O. Box 509
Ely, MN 55731
(218) 365-4811

Mr. Robert LaFortune
Chairman, National High
Adventure Committee
427 S. Boston #2104
Tulsa, OK 74103-4132

Mr. G. Charles Hann
Chairman, Northern Tier
National High Adventure
Committee
435 Peavey Building
730 Second Ave. So.
Minneapolis, MN 55402
(612) 338-9019

Alumni Participate In Annual Northern Tier Fishing Invitational!

For the past several years, the Northern Tier National High Adventure Committee has been developing and improving the concept of an "invitational fishing trip" as a means of promoting Northern Tier Programs to key local, regional and national supporters of Scouting. This past September, event chairman **Mike Holdgrafer** came up with a "winning weekend" at Nelson's Resort on Crane Lake.

Guests arrived on Friday evening, were treated to two days of guided walleye fishing on Crane, Sand Point, and Namakan lakes (both U.S. and Canadian sides) on Saturday and Sunday, and left for home on Monday after breakfast. Participants included: **Frank Spence**, Provincial Scout Executive for Ontario; **Jim Cowan**, President of the Ontario Council, Scouts Canada; **Todd Dost**, Scouter and restaurateur from Claremore, OK; and SAA

members **Charley Hann, Sandy Bridges, Bob Cary, Butch Diesslin, Mike Holdgrafer, and Dave Hyink**. Among the guides was Sommers alumnus **Butch Eggen**.

All agreed that the weekend couldn't have been better. Nelson's Resort is one of the oldest (and some say finest) in the northland. The facilities are first-rate, and the meals are even better! The "shore lunches" were extraordinary, and the weatherman provided two perfect Indian Summer days. Each night we were treated to a Harvest Moon and "loon serenades." Perfect!

In 1995, the Fishing Invitational will be scaled-up to include 20 guests, plus Committee and Alumni (staff) support. The dates are September 15-18, but final details are pending. Let us know if you would like to be a part of this great event!

Help Needed For Staff Training

During your tenure on the staff you gained valuable experience and expertise in minimum impact canoe camping by scout groups. You are invited to join the training group so you can share your canoe camping expertise with the members of the 1995 Northern Tier staff during STAFF TRAINING WEEK, JUNE 4-10, 1995. If

you are interested in volunteering your time for a portion of this week and wish to be a member of the training team, please let us know your area of interest and expertise as an instructor. Please include your date(s) of availability. Drop a note to SAA, Box 428, Ely, MN 55731-0428.

Henry Bradlich Honored At Annual Meeting

The annual meeting of the Charles L. Sommers Alumni Association, Inc. was held at the Ely base on Sunday, September 4, 1994 with approximately 30 members present. Directors **Barry Bain, Zane Beaton, and John Christiansen** were all re-elected to three year terms expiring at the 1997 Annual Meeting. Directors Bain and Beaton reported that the Association's membership numbers 263, including 32 honorary and 139 Life members. Efforts will continue to identify and recruit new members.

In addition to the traditional officer and special project reports, the membership: (1) commissioned artist **Bob Cary**

to produce at least two pen and ink drawings depicting the canoe base and the Quetico-Superior area for future use by the Association, (2) directed that the Association mailing list not be distributed to outside entities, except that labels may be provided for educational opportunity mailing purposes at the discretion of the directors, and (3) committed to provide two new first night cabins to the Sommers base for the 1995 season (see related story).

A highlight of the meeting was a very moving tribute to **Henry Bradlich** by Barry Bain, in which he recognized Henry's "leadership by example." He further related that, "...while it might not always

have been fully appreciated at the time..." it "... made an indelible imprint on our lives, our families' lives, and the lives of the young people we work with..." It was a sentiment felt

by all who knew and worked with Henry.

A copy of the official meeting minutes will be provided upon request by writing the SAA, P.O. Box 428, Ely, MN

Lodge Renovation Continues

Although the Lodge Renovation Fundraising Campaign has been completed, with member contributions nearing \$34,000, the renovation itself is still in full swing. Since last Spring, specialty lighting has been installed in the interpretive portion of the building. These lights are focused on specific exhibits, paintings, prints and works of art. They are very non-intrusive and greatly enhance the natural beauty of the lodge interior as well. The addition of a "cold roof" is nearly complete, and will provide the necessary insulation to allow winterization of the building. Cast iron radiators have

been purchased for the main room (along with a custom fire-place insert), and all wiring for the main room, for the upstairs and for the exterior lighting was installed prior to adding the new roof. In addition, the SAA has purchased and donated a number of items — including artifact replicas and limited edition prints — to be exhibited in the lodge. At the 1995 Alumni Reunion, a plaque bearing the names of all project contributors will be placed in the building. Thanks again to all who gave their time, talents and dollars in support of this very special project.

Committee Chairman Hann Thanks SAA For Its Help

By all measures, this is a great year for Northern Tier.

Participation is up — 24 percent greater than 1993 in the case of the summer canoe program. Average crew size is well above seven, after being at six last year. Participation at Atikokan and Bissett is 37 percent greater than 1993.

The USFS management plan for the BWCAW settled out consistent with Northern Tier recommendations. At the Don Rogert Base (Atikokan), electric power from Ontario Hydro has just been hooked up and arrangements are being made to accommodate more crews in 1995.

At the Sommers Base, final work on the Lodge is about finished (the interactive TV will be installed by Spring), the new administrative building is essentially completed, the Staff Center is being readied for full use in 1995, the new outfitting building (Phase I) is under construction and will be up by the end of the year, construction of the new entrance gateway is underway, and foundations

have been set for six additional first night cabins to be ready in the spring.

The expanded facilities will be put to the test in 1995 with reservations now running almost 15 percent ahead of last year at this time. For its important part in helping Sandy make these things happen, the Alumni Association was voted a big "thanks" at the recent annual meeting of the Northern Tier Committee. Keep up the great work!

SAA Named In Will

The SAA was recently notified of a significant bequest in the will on a non-member. Citing the "... significant role that the canoe base, scouting, and wilderness experiences played in several family members' lives ...", this individual announced a future gift of \$20,000 to SAA to be used "... as the directors see fit to ensure that young people have the opportunity to participate in a high quality wilderness experience ..."



Dick Hall fits new shingles on lodge roof and closeup near fireplace shows new cedar fascia around the new insulated roof addition.



President's Message

As our guide eased the boat ashore and we joined the other members of the Northern Tier Fishing Invitational for a "shore lunch", I was overcome with the feeling that I had visited this spot before. Although much of the canoe country might appear to the novice to be quite similar, each place is quite unique. What's more, each place carries its own special set of memories associated with every visit. This particular spot is now a part of Voyageur's National Park, but in 1967 when **Wayne Lewis, Steve Hudson, Rus Vowell** and I paddled from Ft. Francis to Grand Portage, this scenic campsite near Namakan Narrows was one of our "homes for the night." The current day's creation of future memories of the fresh fried walleye fillets, the perfect Indian Summer Day, the fine fishing with good friends, was made all the sweeter by the fond recollections of that special Grand Portage trip taken 27 years ago. That's part of the magic of the canoe country —

part of the glue that binds generations of SAA members together. But you already knew that didn't you?

I've tried on a number of occasions to explain to "others" why such strong multi-generational support exists (in the form of the SAA) for a "camp." While I suspect that the answer to that question is unique to each of us, a number of common themes would surface. In my own case, I don't see Sommers (or the Northern Tier Program) as a "camp." Sure, the SAA supports the "bricks and mortar." But (with the possible exception of the Lodge) the facilities are simply the means which enable the youth, adults and staff to have "the experience." What is "the experience?" It's surely an unique and personal thing — but for each of us, it became a very special part of who we are and how we live. As young staff members, "the experience" was part of our "coming of age."

An excerpt from a letter from the parents of a '94 Trail

Staffer, following their mid-summer visit to the Base, illustrates:

"We were probably happiest about how we found the condition and attitude of our son. We found him to be very happy with his newfound responsibility. He also seemed very confident in his abilities, yet mindful of the unexpected, in the day to day challenges. The job is not easy, we are sure, and we are also sure that not everyone who tries it, finds it fits their goals or abilities. But we are also sure that (he) loves what he is doing. It was wonderful as parents, to hear what people told us of him, and how he is doing. We came home very proud of our son."

It's hard to put into words, but whatever "it" is, we seek to share it and perpetuate it — to our families, to scouts, to their leaders, and to current and future generations of staff members. What are your thoughts? Let us know and we'll share them with others.

Whatever motivates individ-

ual SAA members, one of the results is a "bias for action!" I wish that I could put into words the extreme sense of pride that I (and others) felt as we reviewed and discussed the various Association projects and initiatives at the September Annual Members Meeting. Our accomplishments and energy are enviable — not to mention essential to the Base and its programs. The swiftness and surety displayed by the assembled membership in responding to the need for two additional "first-nighter" cabins was electrifying. I now ask each and every one of you for your help in making those cabins reality.

Finally to you and yours, the Association Directors, Officers and I extend our best wishes for a Happy Holiday Season, and a most prosperous New Year.



Volunteer "Work" Opportunities Available At Base

Those of us who worked as "Guides" or "Swampers" at "The Base" in the '50's and '60's can fondly remember working between trips — under the supervision of Henry Bradlich — to do "what needed to be done" around the base. This work covered a very broad range — "mining under buildings", scraping and varnishing buildings, plumbing, brush cutting, carpentry — and of course road raking. Henry has retired, but this type of work still needs to be done — now at the three "Bases" — Ely, Atikokan and Bissett.

For those of you who have some time and would like to relive some of the good old days, you are welcome to volunteer some time to visit one of

the bases and get your hands dirty. Now you can work at your own pace and not worry about Henry coming by when you stop for a break — unless he is visiting the base that day. There is equipment, canoes and boats available for trips, day trips, fishing, etc.

Some things needing done are:

First Night Cabin Construction — before 1995 season

Tent site prep (Atikokan) — summer of 1995, ongoing

Base Trail work — ongoing

Maintenance and repair of buildings — ongoing

Canoe maintenance and repair — ongoing

Trail equipment maintenance and repair — ongoing

Road raking and base trail maintenance — ongoing

Why not contact some of your former co-workers and organize a "work detail", base visit and vacation — for old times sake and the good of the

base. There may be Spartan accommodations available at the base. Please call ahead and make arrangements (218) 365-4811.

High Adventure Goes High Tech

In 1995, scouts and advisors will be able to have a "hands-on" experience with the latest in Interactive Touch-Screen Computer/Video Technology. Software, developed by **Paul Schlieve** and several of his associates, will run on state-of-the-art hardware, housed in a kiosk that will be the newest exhibit in the Lodge. By simply touching various "photo menus," users can learn about the BWCAW and Quetico via color slides, motion pictures, drawings, and maps — accompanied by associated audio pro-

grams, including both voice and music. In addition to the "touch-screen," output will also be displayed on an external monitor. There will also be an option in which users can obtain printed information contained on "key screens." Funding for the computer hardware, printer and kiosk came from a very generous alumnus (who prefer anonymity), and the external monitor was obtained by **Craig Pendergraft**. This is a very impressive exhibit — a must see!

The Future Is Here — I've Seen It!

Message From Sandy

The new wave is upon us, and in their own words it is "awesome." I wish each of you could have been with me in Atikokan at the end of August to see the faces of **Jon Hyink** and **Steve Stigler** as they completed their Ely to Atikokan trip. Believe me, the thrill, excitement and challenge of wilderness travel is still there.

Turning over your "stern seat" to these and others should give you nothing but confidence as they leap with you into the 21st century. They are ready, willing and able to take the challenge.

The terrific support of the Alumni is really something to see. I feel a definite pride in watching each of you take over the stewardship of the Northern Tier. As I sat at the meeting, I could only reflect back to other times as "Red" Mattson and Renner, said; "If there is something to do — Let's do it" — two minutes later a guarantee of two new First Night Cabins! Two days later "Red" Renner and **Butch Diesslin** were already here clearing land. Your support of the Lodge and Library project has been fantastic, Butch Diesslin has volun-

teered to "straw boss" the project and it is almost complete. Henry, you can be proud of the way Butch is carrying on your dedication of seeing that the projects are done to make the Base the finest in the North Country.

Challenges — Yes there are many!! Better marketing and recruitment of staff and participants, more scholarships for staff and scouts, continual updating of the office and program for efficient operation, maintenance of facilities, regulations and policies of the BWCAW and the Quetico. These are only a few, but the rewards far outweigh the challenges.

Hang onto your paddle and ski pole as your program bursts into the 21st century with expanded North Country adventures.

FACILITIES UPDATE

The new Administration/Office is complete, the beautiful rock facing is also nearing completion. The staff center, complete with a small kitchen and satellite television will be available for the 1995 season. The outfitting building is well

above ground and ahead of schedule for use next year.

The new roof for the Lodge is complete, again thanks to **Butch Diesslin**. The roof was completed by **Dick Hall** and his team which includes **Bob Oliva**. The new electrical system was also installed as the "cold roof" was being applied. Butch also located some "period" hot water radiators that should add to the decor as well as winter heating.

The foundation wall on the south side of the dining hall finally had to be replaced. Storms and flooding this summer and early Fall made a decision to repair necessary. The entire wall was replaced with upgrading of electrical and plumbing finished at the same time. A new LP gas furnace will also be installed. Those of you that can remember the problems of the wall can rest assured that it is now repaired and in much better condition than when it was installed in 1959.

INVITATIONAL FISHING TRIP

The fishing trip in September, chaired by **Mike**

Holdgrafer, was great. It was held at the famous Nelson's Resort on Crane Lake. Next trip, mid September 1995 (firm dates in the next month or so) mark your calendar for a super event. This is something you won't want to miss.

SPECIAL TRIPS

SCOUTS AND LEADERS — HUDSON BAY TRIP JULY/AUGUST 1995. The trip will be a special event and we need your help! This should be a trip of a lifetime for some deserving Scouts. Send Sandy a note for additional details.

CHURCHILL — HUDSON BAY

Special trip (by air to Hudson Bay), three or four nights, probably in conjunction with the 1995 Reunion. Interested, drop Sandy a note. This trip will be limited to between 20 and 30 participants. What to see — Hudson's Bay!! Fort Prince of Wales (oldest stone fort on the continent), Beluga whales, Polar Bears, etc. A fantastic "near arctic" experience.

Quetico Park Agreement Signed

Negotiations which began in 1991 between the Ontario Ministry of Natural Resources and the Lac La Croix First Nation community have culminated in an agreement whereby certain needs for economic diversification, cultural integrity, and self-determination of the First Nation band will be recognized by changes in the Quetico Park policies and management. Most notably will be the opening of the western one-third of the Quetico to motorized use of up to 10 horsepower by band members, and by authorizing aircraft landings at designated entry lakes. In addition, band members will be allowed mechanized access to any lake in the park for spiritual and cultural

programs.

Under the plan, 10 of the 20 lakes open to motorized guiding by band members will be designated each September for availability the following May. In that way, all lakes will not be subject to commercial motor use every year in order to protect and replenish the fisheries. The 20 lakes affected are: Cirrus, Quetico, Beaverhouse, Badwater, Omeme, Cub, Bear Pelt, Wolseley, Tanner, Pooh Bah, Minn, Roland, Argo, McAree, Basswood, Bottle, Iron, Darky, Wicksteed, and Crooked. Because of the existence of park entry facilities, both Basswood and Beaverhouse will likely be named "entry lakes."

Sommers Alumni Promote Base At Atlanta Boy Scout Show

Alumni **Mike Tuttle** and **Roy Conradi** manned a booth promoting the Northern Tier High

Adventure programs November 19 at the Atlanta Boy Scout Show. Over 50,000 attended the event.



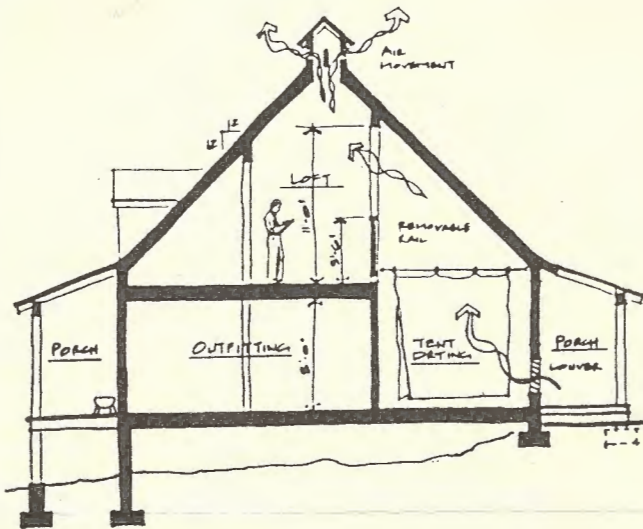
New Outfitting Building Under Construction

In the late 1970's the main outfitting building, known to many as the F.A. Bean Bay Post, was razed because a portion of it was over the boundary line of the BWCAW. Several of its key functions were subsequently relocated to the "Tee

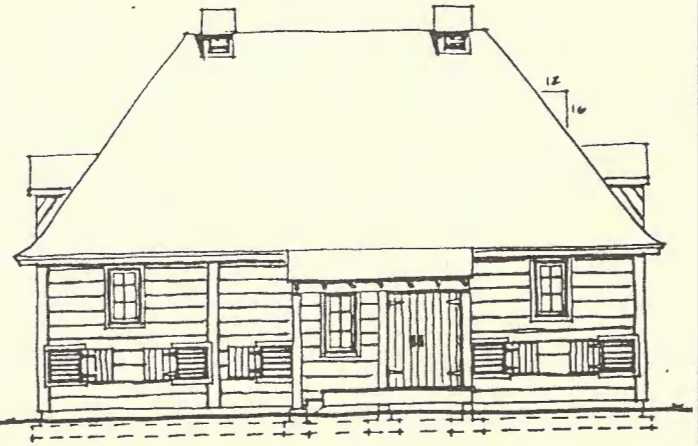
Pee" building. This fall, construction began on a new Outfitting Building. Located between the Hanson House and the Lodge, this 36 x 42 foot building will house the trail food operation. In addition, there will be areas for tent dry-

ing, a Program Office, an equipment maintenance area, and men's and women's restrooms (to also serve the Lodge building). The architectural theme is consistent with the Fur Trade era. The building will be a simple structure with

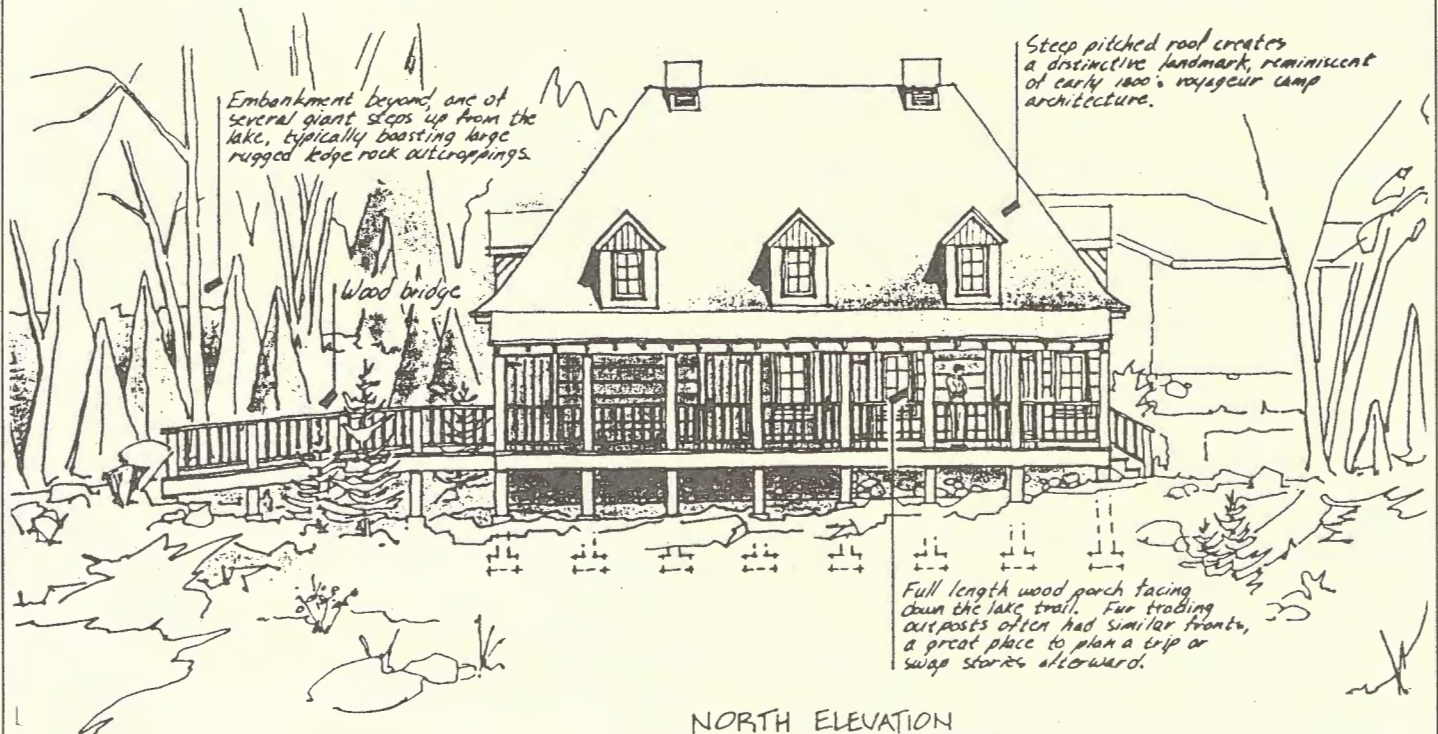
rough sawn siding and beams and a high pitched roof with light and ventilation dormers, resembling similar buildings at Grand Portage and Old Fort William. The building will be completed and in full use at the beginning of the 1995 season.



BUILDING SECTION



SOUTH ELEVATION



NORTH ELEVATION

Full length wood porch facing down the lake trail. Fur trading outposts often had similar fronts, a great place to plan a trip or swap stories afterward.

Return to the Isle of Pines

By Butch Diesslin

As we paddled up to the south end of the largest of Dorothy Molter's Isles of Pines, it wasn't until we were less than 50 yards from shore, near where Dorothy's "Winter Cabin" stood, that we could see any sign of former human habitation. The unnatural thing about the shoreline was the anchoring of a log along the shore - and the big spikes still in it - that held the dock in place.

My wife Lucy and I were members of a group who had paddled up to Knife Lake on a four-day canoe trip, which was organized and outfitted by THE B's WILDERNESS PADDLERS. The proceeds of the trip went to the DOROTHY MOLTER MEMORIAL FOUNDATION, for the operation of the DOROTHY MOLTER MUSEUM.

The morning of the second day of the trip was spent paddling to the Isles of Pines to pay our respects to Dorothy's memory, to remember how the islands were when Dorothy was alive, to reminisce about our meetings with Dorothy and her legacy to everyone who had stopped over the years.

When Dorothy died in December, 1986, the islands were to be returned to their "natural state" by removing all signs of habitation. Some of the people who knew Dorothy best - especially members of the area snowmobile clubs and the members of the area's volunteer search and rescue group - were able to arrange with the U.S. Forest Service and the Molter family to dismantle and remove three of Dorothy's cabins for reassembly as a museum. The cabins were hauled over the ice from Knife lake to Ely by dog sled.

The only signs of human habitation remaining today are the shoreline pier logs, some of the underwater bridge cribbing

and a pile of old bottle caps on the island where Dorothy's "Summer Cabin" had been. The U.S. Forest Service has placed wooden signs on the islands which read:

"THIS IS THE FORMER HOMESITE OF DOROTHY MOLTER. YOU ARE WELCOME TO PAY YOUR RESPECTS BUT PLEASE NO CAMPING."

The trip was very leisurely

and the food was outstanding!

The B's - **Barb Anderson** and **Bea Brophy** - are not your typical canoe trip outfitters and guides. They are both in their 70's and specialize in trips with gourmet meals, at a pace that is very manageable. This is the first canoe trip for me where we had a frozen/cold food pack and a menu that included real Chicken Kiev, which rivaled that of most fine restaurants.

The Dorothy Molter Memorial Foundation and The B's are planning on offering the same trip next summer. If you, or someone you know, would like to go along you can get more information from The B's Wilderness Paddlers, 1896 Deer Haven Dr., Ely, MN 55731, (218) 365-6026 or The Dorothy Molter Museum, P.O. Box 391, Ely MN 55731, (218) 365-4451.

Wilderness User Course Offered

Vermilion Community College in Ely is offering a WILDERNESS USER EDUCATOR course. The purpose of the course is to establish a pool of individuals who can educate the users of wilderness areas prior to their visit. Those who complete the Wilderness User Educator course will be certified by Vermilion to offer a WILDERNESS USER course for continuing education units (CEU's) through Vermilion Community College.

The curricula for the Wilderness User Educator and the Wilderness User courses have been developed by **Dr. Ron Person**, Vermilion's Wilderness Program Leader, to give the users of wilderness areas a better understanding of the concept of wilderness, the development and management of the US's wilderness system, and what to expect on a visit to a wilderness area. The goal being that the users of the wilderness areas will have realistic expectations before their trip, and as a result will have an enjoyable experience which will not infringe upon the experience of other users.

The first offering of the Wilderness User Educator course was April 7-10, 1994. Ron Person asked co-worker

Butch Diesslin if he knew of some experienced users of wilderness areas who would be willing and able to critique the course content. Butch searched the Alumni data base for the names of those who had indicated an interest in training. From those names, twelve Sommers Alumni members were able to attend: **Al Batterman, Zane Beaton, John Christiansen, Bob Christie, Butch Diesslin, Joe Mattson, Dave and Sherry McGregor, Mark Nordstrom,**

Bob "Red" Renner, Joel Sheagren and Eric Simula.

The Wilderness User Educator course combines the content of the Wilderness User course along with suggestions and training on how to present the material.

The Wilderness User course covers wilderness philosophies, the Wilderness Act, and the management of wilderness areas. Training in minimum impact travel and camping skills is left to other courses.

Seasonal Base Staff Needed

Although not reaching participant levels of the late 60's, 1995 is shaping up to be one of the biggest years in recent history. As a result, the need for seasonal staff will increase somewhat. If you know of top-flight young people who could make a positive contribution to the Base and its programs, you are encouraged to send their names and address-

es to **Sandy Bridges**, Director, Northern Tier National High Adventure Program, P.O. Box 509, Ely, MN 55731. Applications will be forwarded directly. While experience is preferred, it is not mandatory, since all seasonal staff go through a very comprehensive training program prior to the start of each season.

Joe Seliga Restores Workshop

SAA members will be delighted to know that **Joe Seliga** is well on the way to restoring his workshop, and is again making those wonderful

canoes! Way to go Joe! He recently went on a fly-in fishing trip in central Ontario with **Doug McDuff**.

Plans Under Way for "Rendezvous '95" SAA Reunion

Early Planning is well under way for the biannual reunion of the Charles L. Sommers Canoe Base Alumni, set for Labor Day weekend September 1-4, 1995. Mark your calendars now and get the family plans locked in for all to attend.

The agenda includes:

Friday 9/1	Early registration and check-ins. Getting re-acquainted.
Sat. 9/2	
AM	Final registration
Noon	Gateway Dedication Ceremony
PM	Rendezvous Skill Activities for the Whole Family
Evening	Dinner and Keynote
Midnight	Aurora Borealis Check
Sun. 9/3	Vespers and free Time
1:00 p.m.	Annual Meeting of the SAA

Afternoon Free time and early departures
Mon. 9/4 Happy trails to you!

The reunion is planned to be an opportunity for the whole family to get to know the Base better. Also alumni can find opportunities to stay involved with the base.

The kick-off at the gate dedication will be an event you will want to be part of. The new main entrance gateway is being built as a replica of the main gate at old Fort William. Sandy Bridges says, "It's really a lot nicer than the gate recreated and built at Fort William."

Saturday's schedule for rendezvous skills will include such adventures as hatchet throwing, black powder rifle firing, and a north canoe cargo trip to Prairie Portage, just to mention a few. In addition, there will be information and tours available for updates on the state-of-the-art in canoe camping and staff

development at the base. Volunteers with any interest in the fur trade theme are encouraged to contact the planning committee members with activities they can coordinate.

BOB CHRISTI KEYNOTE SPEAKER

Bob Christi, member of the Northern Tier Volunteer Committee is scheduled as the keynote speaker and guest of honor for the reunion.

Christi's involvement with outdoor living has been a lifelong endeavor. For 25 years he taught and developed outdoor living programs at the state university level including Indiana State, Illinois, Bemidji State in Minnesota and currently in retirement at Lake Head University in Ontario.

About his career Christi states, "Such things as canoeing and camping or rock climbing are easy. You can teach someone the technical skills in a cou-

ple of weeks, but you don't develop a leader in just a few weeks.

Christi is one of the founders of the Wilderness Education Association, the leading certifier of wilderness leaders in the nation. He was also instrumental in developing some of the curriculum and infrastructure for the Okpic program in the early seventies.

From his home in Kaministiquia, Ontario, Christi is the only Canadian on the Camping Committee. He has been one of Sandy's primary advocates in developing an official relationship between the Canoe Base and Fort William.

Bob Christi's insight and overview of both wilderness living and fur trade history will be a highlight for all of us in our relationship with the base and the wilderness.

SOMMERS ALUMNI ASSOCIATION
P.O. BOX 428
ELY, MINNESOTA 55731



NON-PROFIT
U.S. POSTAGE
PAID
ELY, MN
PERMIT NO. 102

